

**Features**
**GENERAL**

<i>Standards</i>	<i>CECC 122230</i> <i>DIN 47297</i> <i>DIN 41626 - 2</i>	
<i>Materials</i>	<i>Bodies and Nuts</i> <i>Inner male contact</i> <i>Inner female contact</i> <i>Outer male contact</i> <i>Insulators</i> <i>Crimp ferrules</i>	<i>Brass or zamak</i> <i>Brass or beryllium copper</i> <i>Beryllium copper</i> <i>Beryllium copper</i> <i>PTFE or FEP</i> <i>Copper</i>
<i>Finishes</i>	<i>Contact surfaces</i> <i>Female connector bodies</i> <i>Male connector bodies (types A,B,C,D)</i> <i>Male connector bodies (type E)</i> <i>Crimp ferrules (types A,B,C,D)</i> <i>Crimp ferrules (type E)</i>	<i>Gold</i> <i>Gold</i> <i>Nickel</i> <i>Gold</i> <i>Nickel</i> <i>Gold</i>
<i>Dimensions</i>	<i>For coupling types and interface mating dimensions see pages 2 ÷ 3</i>	

**ELECTRICAL**

<i>Impedance</i>		<i>50 Ω / 75 Ω</i>
<i>Frequency range</i>	<i>50 Ω types with 50 Ω cables</i> <i>50 Ω types with 75 Ω cables</i> <i>75 Ω types with 75 Ω cables</i>	<i>≤ 10 GHz</i> <i>≤ 0,3 GHz</i> <i>≤ 2 GHz</i>
<i>Voltage rating (1)</i>	<i>At see level</i> <i>At 20 Km altitude</i>	<i>≤ 250 V rms</i> <i>≤ 65 V rms</i>
<i>Dielectric withstanding voltage (1)</i>	<i>At see level</i> <i>At 20 Km altitude</i>	<i>750 V rms at 50 Hz</i> <i>150 V rms at 50 Hz</i>
<i>Contact resistance (1)</i>	<i>Inner contact (50 Ω)</i> <i>Inner contact (75 Ω)</i> <i>Outer contact (50 Ω - 75 Ω)</i>	<i>≤ 4 m Ω</i> <i>≤ 10 m Ω</i> <i>≤ 2,5 m Ω</i>
<i>Insulation resistance (1)</i>		<i>≥ 1 G Ω</i>
<i>Reflection coefficient (1)</i>	<i>50 Ω types with 50 Ω cables and f ≤ 1 GHz</i> <i>1 - 4 GHz</i> <i>4 - 10 GHz</i> <i>50 Ω types with 75 Ω cables and f ≤ 100 MHz</i> <i>100 - 200 MHz</i> <i>200 - 300 MHz</i> <i>75 Ω types with 75 Ω cables and f ≤ 2 GHz</i>	<i>≤ 0,05</i> <i>≤ 0,07</i> <i>≤ 0,15</i> <i>≤ 0,04</i> <i>≤ 0,07</i> <i>≤ 0,1</i> <i>≤ 0,1</i>

**MECHANICAL**

<i>Withdrawal force inner female contact</i>		<i>≥ 0,2 N</i>
<i>Withdrawal force outer male contact</i>		<i>≥ 0,7 N</i>
<i>Insertion force between jacks and plugs</i>	<i>Types A,C,E</i> <i>Type B,D</i>	<i>≤ 10 N</i> <i>≤ 25 N</i>
<i>Withdrawal force between jacks and plugs</i>	<i>Types A,C,E</i> <i>Type B,D</i>	<i>≥ 0,9 N</i> <i>≥ 3 N</i>
<i>Connector durability</i>		<i>≥ 500 cycles</i>

**ENVIRONMENTAL**

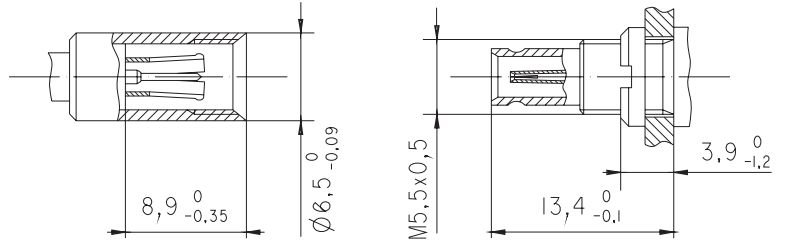
<i>Temperature range</i>	<i>- 40 °C ... + 85 °C</i>
--------------------------	----------------------------

 (1) Guideline values depending on cable connector types

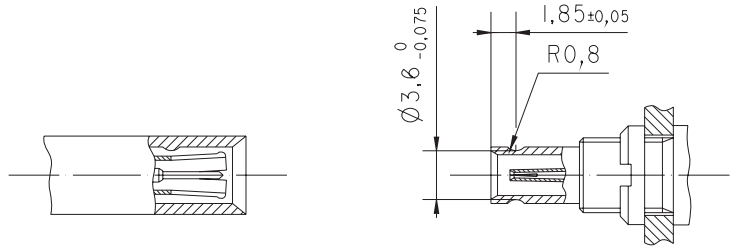
Sistemi di accoppiamento

Coupling types

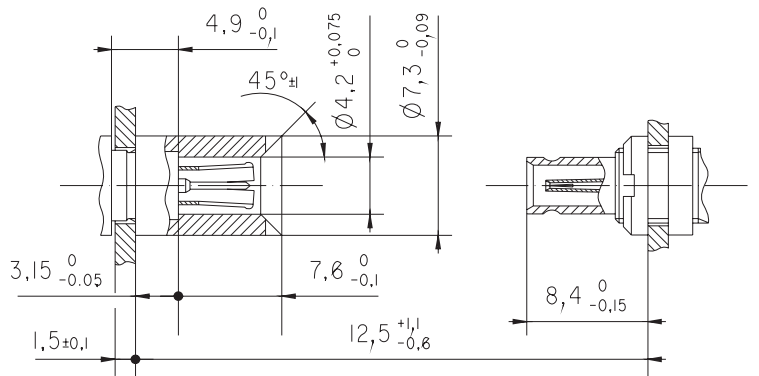
**A** Innesto a vite  
Thread



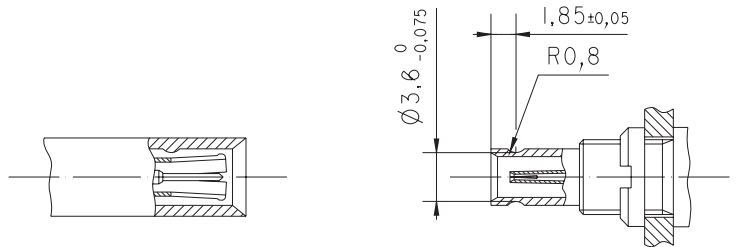
**B** Innesto a scatto  
Snap-on



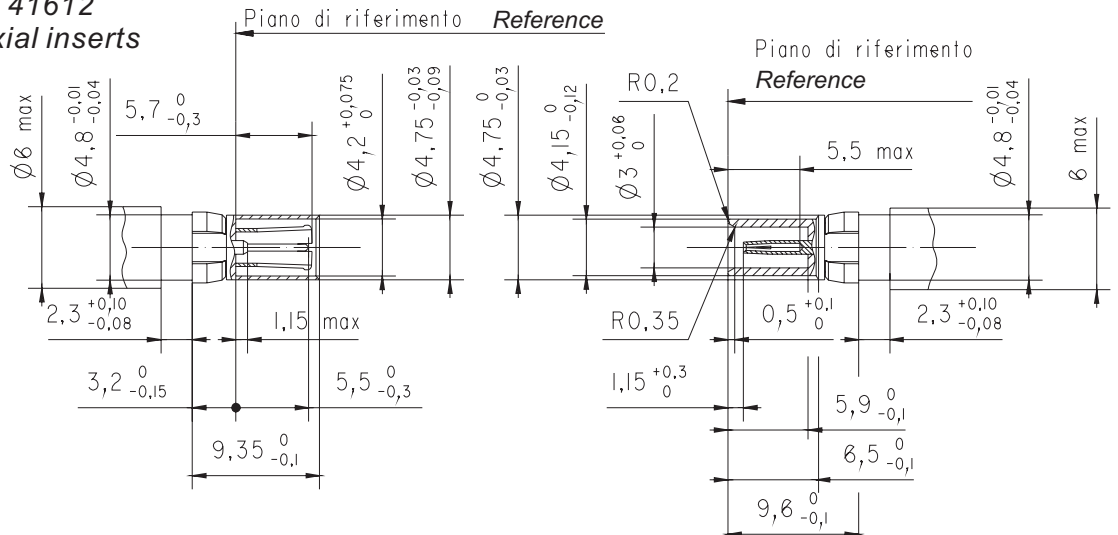
**C** Innesto con guida e gioco radiale  
Slide-in



**D** Innesto a scatto autobloccante  
Push-pull

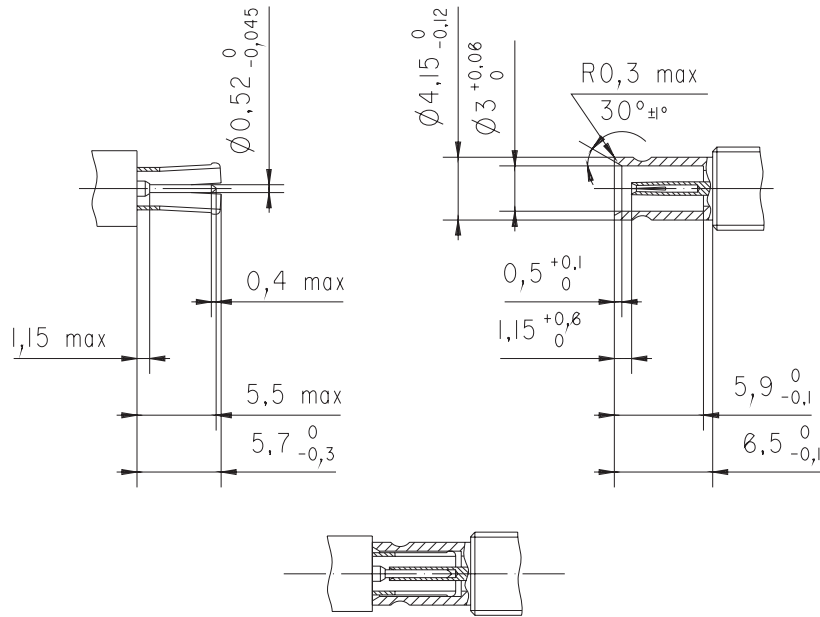


**E** Innesto con guida-inserti per connettori DIN 41612 tipo M  
Plug-in DIN 41612  
M type coaxial inserts



Dimensioni di accoppiamento

Interface mating dimensions



Dimensioni di foratura pannello/piastra c.s.

PCB and Panel cutout dimensions

Tipo / Type	$\varnothing A$
1	$5,7^{+0,1}_{+0,03}$
2	$6,2^{+0,13}_{+0,04}$
3	$6,8^{+0}_{-0,1}$

