

# CONNETTORI COASSIALI 1.0/2.3 COAXIAL CONNECTORS

Connettore maschio volante.

Sistema d'accoppiamento: con guida e gioco radiale.

Conforme a norme DIN 47297 e CECC 22230.

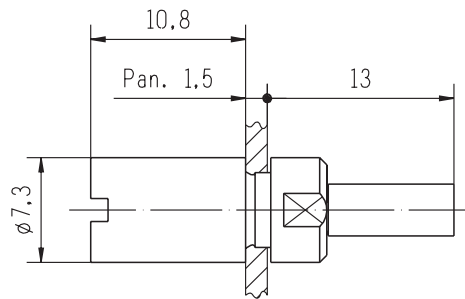
Impedenza: 50Ω

*Free plug.*

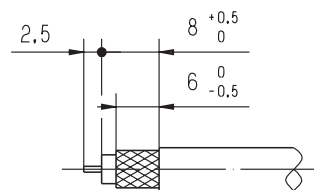
*Coupling type: slide-in.*

*According to DIN 47297 and CECC 22230.*

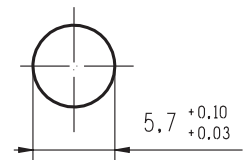
*Impedance: 50Ω*



Part. n°	Cavo/Cable	Ø ext.
350.044.002	2YCCY 0,4/2,5 (75Ω)	4,5 ±0,3



Dimensioni foratura pannello  
Panel cutout dimensions



### **Sistema di attacco al cavo :**

Contatto interno: a saldare

Contatto esterno: a crimpare con esagono 5.41 e lunghezza di crimpatura 8.

### **Cable attachment :**

*Inner contact: soldering*

*Outer contact: crimping - die closure dimension HEX 5.41 and length of crimping 8.*

ED.	DATA/ DATE	FIRMA / SIGN.	ED.	DATA/ DATE	FIRMA / SIGN.	ED.	DATA/ DATE	FIRMA / SIGN.
01	01.03.02	Ds Cv						