

# CONNETTORI COASSIALI

## 1.0/2.3

### COAXIAL CONNECTORS

Connettore maschio volante.

Sistema d'accoppiamento: con guida e gioco radiale.

Conforme a norme DIN 47297 e CECC 22230.

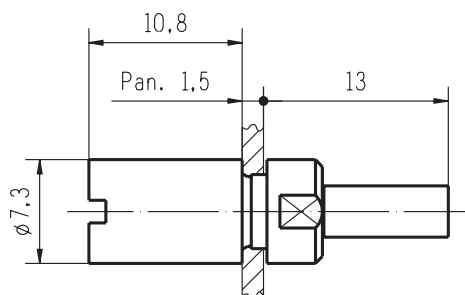
Impedenza: 50Ω

*Free plug.*

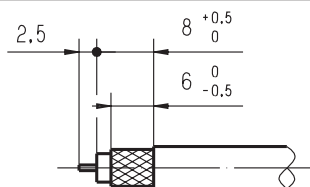
*Coupling type: slide-in.*

*According to DIN 47297 and CECC 22230.*

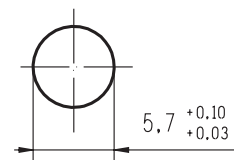
*Impedance: 50Ω*



Part. n°	Cavo/Cable	∅ ext.
<b>350.044.001</b>	RG 179 B/U (75Ω)	2.54 ±0.127
	RG 187 A/U (75Ω)	2.79 max
	RG 188 A/U (50Ω)	2.79 max
	RG 316/U (50Ω)	2.49 ±0.1
	TZC 75101 (75Ω)	2.79 max



Dimensioni foratura pannello  
 Panel cutout dimensions



**Sistema di attacco al cavo**

Contatto interno: a saldare

Contatto esterno: a crimpare con esagono 3,25 e lunghezza di crimpatura 8.

**Cable attachment**

*Inner contact: soldering*

*Outer contact: crimping - die closure dimension HEX 3,25 and length of crimping 8.*

ED.	DATA/DATE	FIRMA/SIGN.	ED.	DATA/DATE	FIRMA/SIGN.	ED.	DATA/DATE	FIRMA/SIGN.
01	04.10.01	Lz Ng						